

Prospectus



Inspiring and empowering young disabled students to live fulfilling and more independent lives.



Good



Apply for your place today!



Contents

| | |
|----|---|
| 3 | Messages from CEO and Principal |
| 4 | Our impact |
| 6 | How we do it |
| 7 | Majors |
| 8 | Student journey |
| 10 | Curriculum intent |
| 11 | Implementation |
| 12 | Mandatory courses |
| 16 | Optional courses |
| 30 | Student Voice |
| 31 | Safeguarding |
| 33 | What does Orpheus look like |
| 34 | Facilities |
| 35 | Housing |
| 36 | Student activities and clubs |
| 37 | Outreach and performances |



| | |
|----|--|
| 38 | Therapy provision |
| 40 | Care and support service |
| 41 | Careers: Meet Sam |
| 42 | Transitions and careers |
| 44 | Life beyond Orpheus |
| 45 | Applying for a place |
| 46 | Get involved |
| 47 | How to find us |



Learning at Orpheus

Every year we see accomplished, confident and proactive young people achieving great things.

Learning is not just focused around the classroom, but goes out into the real world and looks at the issues within it to develop and nurture the students' aspirations, and encourage a sense of leadership in shaping our cultural life.

After completing their studies at Orpheus, students take their developed skills and self confidence out into the workplace and beyond.

Message from CEO, Andrew Willetts



We believe in the potential of every young person. Our vision is an inclusive world where disabled young people, with a passion for the arts and a desire to live and work independently, can achieve their aspirations. Every day, we see that vision come to life through the determination and talent of the students who choose to come here.

Our mission is to inspire and empower young disabled students to live fulfilling and independent lives. Through a unique blend of the arts, supported housing, and life skills education, we provide a nurturing environment where students can grow in confidence, discover their voice, and shape their own futures.

Our values are joyful, bold, inclusive, resilient and determined, affectionately called JoyBIRD. They underpin everything we do. We

recognise and respect differences, we work hard to be the best we can be and do it all while we're having a lot of fun!

Whether you are a prospective student, family member, or supporter, I invite you to discover how the Orpheus Centre is transforming lives through creativity, independence, and opportunity.

Thank you.

Message from Principal, Chloe Smith



I'm delighted that you are thinking about joining the Orpheus community. We work very hard to make sure that Orpheus is a vibrant, creative, and supportive place where there's always something inspiring happening – especially fun!

At Orpheus, we believe in big dreams, trying new things, and supporting each other every step of the way. We are always thinking of new ideas and activities, so it fits your needs and aspirations - both now and in the future. We listen hard to what you want to learn and how you want to learn it. This helps us shape our lessons and keep up with changes in the world of work and community.

We're passionate about working

with professionals from the arts and creative industries. This gives you practical learning and real-world experience. It helps you build the skills you need to support your independence and plans for your future. You will be proud to be part of the Orpheus Centre—and we are very proud of all the students.

We hope that you will join us—and we can't wait to see all the amazing things you'll do!

Orpheus has a proven record in enabling students to gain formal qualifications, develop independence skills and improve their wellbeing

98% of students said: "I am happy at Orpheus and I am enjoying my study programme"

96% of students feel that they know how to be safe online



94% of students said that therapies helped them learn

95% of students feel that college is accessible to them



Data from student survey 2024



100% of students said: "The support I get in class helps me learn"

94% of students said that they feel more confident since attending college

95% of students would recommend us to their friends

100% of students feel safe while attending college

95% of students feel that they know how to get help when they need it



"I deal better with change now"
- Student

Using the Arts to succeed

We use the arts as a tool to enable students to grow their personal development, cognitive and communication skills and to achieve an overall sense of self-worth, pride and confidence. All students choose a major subject to focus on when they join and this currently includes drama, dance, music, creative arts or film and media.

Students work on whole college activities, productions and projects as well as those focussed on their chosen subject group and these often involve partnering with professional disabled artists and practitioners with public performances, exhibitions and events.

Skills are developed around technical ability, communication, creativity and problem solving, teamwork, self-regulation, peer support, professional and work skill development, punctuality and timekeeping and exploring and dealing with difficult themes.

Students follow vocational study programmes, within their major groups over years 1 & 2 and often switch groups after year 1 to develop greater depth of knowledge and experience of the professional arts world.



Drama Majors

Students learn:

- acting for stage and film
- script writing
- character development
- ensemble performance.

Students spend two full days a week enhancing their expertise and passion for their chosen subject whilst working towards their Arts Award qualifications.

Music Majors

Students learn:

- technique
- contemporary and historical ideas within music
- creation of original compositions
- exploration of their own interests and identity

Music Majors regularly record and perform their work, for example at the Freemasons Hall, London, during our 25th anniversary Gala.

Creative Art Majors

Students learn:

- technique
- historical art
- studio practice
- the use of mediums like, photography, sculpture, painting and print

Creative Arts Majors participate in gallery, production company and studio visits and collaborate with professional artists in new work and exhibitions.



Film & Media Majors

Students learn:

- cinematic technique - studio and editing skills
- contemporary and historical styles
- to explore a wide range of film making including:
 - » documentary
 - » drama
 - » interview
 - » green screen and animation

Their films are promoted throughout the year.

Dance Majors

Students learn:

- dance technique - contemporary and historical
- professional workshops
- original work for performance

Most recently and notably was the performance at the London Coliseum at the invitation of All England Dance in front of more than 2,000 people.

Company Day

This is our professional work skills day when all students come together to become a professional theatre company which, twice a year, produces original work for a paying audience in the winter and summer terms. We work with the five Majors – all collaborating to create new work or adaptation. We explore different approaches and present work that is traditional as well as experimental, site specific and immersive.

An Example of a recent Company Day project was a short feature film *Where's Our Jobs?* A blend of interview and fictional and creative explorations of the meaningful, paid employment disabled people have access to. It is a creative and innovative approach to real life issues around the obstacles faced by disabled people accessing work, which the students have a personal connection to. We collaborated with people including local MPs, theatre and circus companies and SES Water.

The arts are at the
centre of everything we do.
It has the power to transform lives
and make positive change.

Student Journey

Year 1

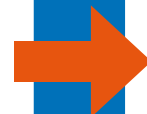
Establish

Before you arrive

- Assessment
- Personalised transition as required
- Pre-CEIAG
- Taster & Choice day
- Invites to attend various events

Your first year

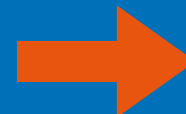
- Thorough initial baseline assessment
- Creation of personalised learning plan and timetable
- Regular progress reviews
- Personalised qualifications
- Personalised therapy and wellbeing
- English and Maths skills qualification entry [as appropriate]
- Access to the arts - Majors curriculum
- Explore all learning pathways [work, living & leisure and learning & training] to help you decide your pathway
- In-house work experience - enterprise and in-house production company
- Educational visits - arts and pathways related
- Choices event and careers guidance
- Independence and PSHE curriculum
- Access to evening and weekend enrichment



Year 2

Grow and Develop

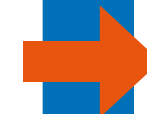
- Baseline assessment
- Creation of personalised learning plan and timetable
- Personalised qualifications
- Personalised therapy and wellbeing
- English and Maths skills qualification entry [as appropriate]
- Regular progress reviews
- Access to the arts - Majors curriculum
- Start on your pathway - [work, living & leisure or learning & training]
- In-house work experience - enterprise and in-house production company
- Educational visits - arts and pathways related
- External work experience placement
- Independence and PSHE curriculum
- Choices event and careers guidance to check chosen pathway is still appropriate
- Access to evening and weekend enrichment programme



Year 3

Demonstrate

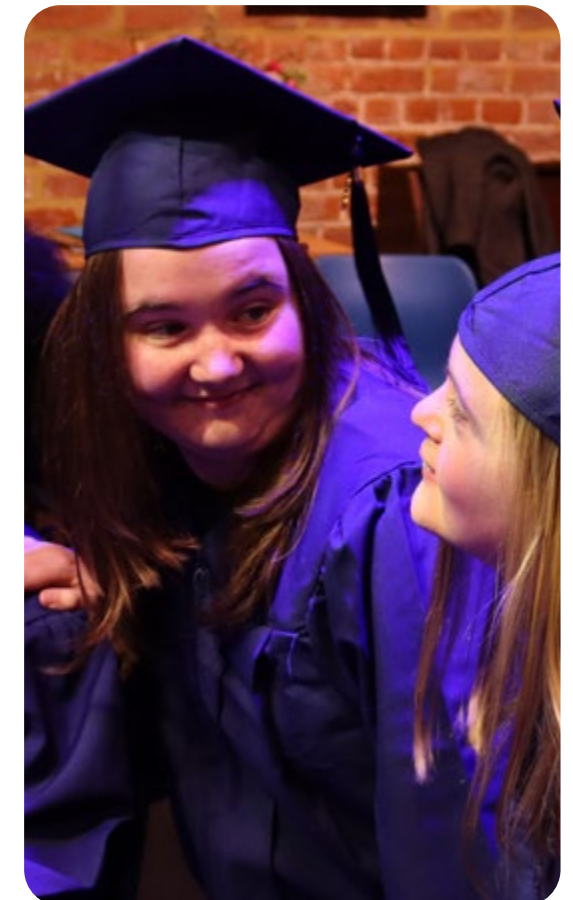
- Creation of personalised learning plan and timetable
- Personalised qualifications related to identified transition pathway
- Personalised therapy and wellbeing
- English and Maths qualification entry [as appropriate]
- Next stage curriculum
- In-house work experience - enterprise and in-house production company
- Begin transition opportunities related to chosen pathway including extended work experience
- Build transition plan
- Careers guidance
- Independence and PSHE curriculum
- Access to evening and weekend enrichment programme



Year 4

Transition (After Orpheus)

- Personalised transition plan
- Access to transition team for up to six months [or one year in exceptional circumstances]
- Graduation event
- Alumni events
- Online Alumni wellbeing forum



Curriculum intent

Orpheus aims to provide a curriculum of opportunity and ambition that is tailored to students' individual needs and aspirations whilst building resilience to meet the challenges in daily life.



We want our students to be fully equipped with the skills, knowledge, behaviours and experience to actively contribute and own their rightful place in society.



Implementing our curriculum

Orpheus aims to provide a curriculum of opportunity and ambition that is tailored to students' individual needs and aspirations whilst building resilience to meet the challenges in daily life.

Focus on the Arts

- Major Arts curriculum
- Industry standard equipment
- Casting
- Industry experienced staff
- In-house theatre company
- Performances/exhibitions

Exploration

- Educational visits
- Speakers
- Collaborations
- Work experience
- Social action
- Community trips
- Project and real world learning

Student centred

- Surveys
- Safeguarding Ambassadors
- Wellbeing Forum
- Student Council
- Arts Council
- Personalised Therapy and Wellbeing
- Celebrate success
- Equality, Diversity and Inclusion Forum

Build skills and knowledge

- Functional skills
- Independence studies
- PSHE
- Company day
- Enterprise day
- Transition pathways
- Travel training
- What's on Friday
- Self-regulation
- Qualifications
- Skills Wheel

Personalised

- Personalised timetable
- Termly progress reviews
- Targets linked to EHCP outcomes
- 1:1 tutorials
- Personalised learning plan
- Careers guidance
- Transition plan
- Communication and support passport



English

You must do this course as part of your learning programme.

What you will do on this course:

- Creative writing
- Formal writing
- Group discussions and conversations
- Presentations about things you're interested in
- Improve spelling, punctuation, grammar

This course is available as:

- Skills for Life Day (Monday or Tuesday)

MANDATORY

ALL STUDENTS



MANDATORY

ALL STUDENTS



Independence

You must do this course as part of your learning programme.

What you will do on this course:

- Travel training
- Trips out to towns, shops, restaurants, and other interesting places
- Cooking and being safe in the kitchen
- Know how to be safe in the community
- Understand personal health and hygiene
- Know how to have wants and needs heard by others

This course is available as:

- Skills for Life Day (Monday or Tuesday)

Maths

You must do this course as part of your learning programme.

What you will do on this course:

- Telling the time
- Using and managing money
- Using timetables
- Measuring
- Adding, subtracting, multiplying and dividing

This course is available as:

- Skills for Life Day (Monday or Tuesday)

MANDATORY

ALL STUDENTS



MANDATORY

ALL STUDENTS



PSHE

You must do this course as part of your learning programme.

What you will do on this course:

- Learn about consent and friendships
- Learn about relationships and sex
- Develop understanding of online safety
- Develop understanding of radicalisation
- Celebrate important cultural events
- Know how and when to make emergency calls
- Understand risks of alcohol
- Learn about other important current topics and trends

This course is available as:

- 2x 1 hour sessions fitted into your curriculum

Sport

This course is mandatory which means you must do it as part of your learning programme.

What you will do on this course:

- Play different games
- Do different activities and exercises
- Understand how physical activity supports your physical and mental wellbeing

This course is available as:

- 1x 1 hour sessions fitted into your curriculum

MANDATORY

ALL STUDENTS



Zones of Regulation

This course is mandatory for year one students which means you must do it as part of your learning programme if you are in this year group.

What you will do on this course:

- Identify different coloured zones linked to feelings and emotions
- Recognise how each coloured zone may present itself
- Know ways to manage different coloured zones

This course is available as:

- 1x 1 hour session fitted into your curriculum

MANDATORY

YEAR 1 ONLY



Transitions Pathway

MANDATORY

YEAR 2 & 3 ONLY

This course is mandatory for Year 2 and 3 students which means you must do it as part of your learning programme if you are in these year groups.

What you will do on this course:

- Identify employment, housing, leisure, or education opportunities that interest you
- Know what skills you have and want to develop
- Know how you prefer to learn and work
- Build a portfolio of your achievements

This course is available as:

- 1x 1 hour session fitted into your curriculum



Access

This course is suitable for you:

- If you enjoy going out into the community and making a difference
- If you enjoy designing and writing
- If you like working as part of a team
- If you enjoy using ICT and being creative

What you will do on this course:

- Take photographs and record videos
- Audit spaces for their accessibility
- Design posters and maps
- Present your ideas to groups

This course is available as:

- Enterprise Day (Wednesday)

Creative Arts

This course is suitable for you:

- If you enjoy art exhibitions
- If you enjoy making artwork such as drawings, painting, models, sculpture, photographs, and collage
- If you enjoy discussing your ideas and sharing your work

What you will do on this course:

- Use a range of art materials, tools, and equipment
- Use a range of art techniques
- Take photographs and make videos
- Participate in public shows and exhibitions
- Create artwork using inspiration from workshops
- Communicate your ideas using creative arts

This course is available as:

- Majors Day (Monday or Tuesday & Friday)

OPTIONAL

ALL STUDENTS



OPTIONAL

ALL STUDENTS



Creative Activism

OPTIONAL

ALL STUDENTS

This course is suitable for you:

- If you enjoy discussing and suggesting ideas
- If you enjoy using research
- If you enjoy making things such as art, videos, photographs, performances, or presentations
- If you enjoy choosing your own topics as well as working as a team

What you will do on this course:

- Choose a range of different topics to research and discuss
- Devise and make performances
- Take photographs and make videos
- Design posters and information about Awareness Days and other important topics
- Learn about Human Rights
- Discuss your passions and how you would like to change the world
- Design merchandise which can be sold

This course is available as:

- Enterprise Day (Wednesday)



Dance

OPTIONAL

ALL STUDENTS

This course is suitable for you:

- If you enjoy exploring different genres of dance
- If you enjoy learning new dance skills
- If you enjoy improvising, creating, and performing movement
- If you enjoy working with others as well as alone

What you will do on this course:

- Research and learn about different styles of dance
- Improve the technical skills you have as a dancer
- Develop and practice improvisation skills
- Create sequences of movement based on visual and aural stimulus.
- Explore your identity as a dancer
- Evaluate your performance highlighting the successes and areas for improvement
- Analyse the work of your peers and offer constructive criticism

This course is available as:

- Majors Day (Monday or Tuesday & Friday)
- Company Day (Thursday)

Drama

OPTIONAL

ALL STUDENTS

This course is suitable for you:

- If you enjoy exploring different genres of drama
- If you enjoy learning new drama skills
- If you enjoy improvising, dialogues, and working as an ensemble
- If you enjoy working with others as well as alone

What you will do on this course:

- Research and learn about different styles of theatre
- Improve the technical skills you have as an actor
- Develop and practice of theatre-specific terminology
- Create devised theatre to a stimulus
- Explore your identity as an actor
- Explore a variety of mediums on and off the stage including: directing, design, script-writing, screen-acting, autobiographical and character acting
- Work towards your own footprint within the industry, creating performance resumes, self-tapes and live audition practice

This course is available as:

- Majors Day (Monday or Tuesday & Friday)
- Company Day (Thursday)



Film & Media

OPTIONAL

ALL STUDENTS

This course is suitable for you:

- If you enjoy coming up with ideas
- If you enjoy learning about cameras and using film equipment
- If you enjoy working as a team

What you will do on this course:

- Make films
- Write scripts
- Edit films
- Act in films
- Use cameras
- Use sound equipment
- Learn about jobs in the film industry

This course is available as:

- Majors (Monday or Tuesday and Friday)
- Enterprise Day (Wednesday)
- Company Day (Thursday)



Forum Theatre

OPTIONAL

ALL STUDENTS

This course is suitable for you:

- If you enjoy working with others and as part of a team
- If you like visiting the community
- If you enjoy performing to others

What you will do on this course:

- This is a wonderful experience for learners to expand their knowledge and experience with a focus on the most crucial aspect of performance art: the audience
- You will create your own theatre company
- You will devise a piece of theatre that explore a theme of choice.
- You will go on your own theatre tour

This course is available as:

- Enterprise Day (Wednesday)



Hospitality & Catering

OPTIONAL

ALL STUDENTS

This course is suitable for you:

- If you enjoy cooking and baking
- If you enjoy serving and hosting
- If you enjoy being creative
- If you enjoy food

What you will do on this course:

- Research and develop recipes
- Create menus
- Prepare and cook / bake food to sell in the Arts Café
- Serve in the Arts Café
- Serve at events both on and off site
- Work with professional chefs in the industry
- Learn skills needed to work in a company

This course is available as:

- Enterprise Day (Wednesday)
- Next Stage (Friday) (3rd years only)

Marketing

OPTIONAL

ALL STUDENTS

This course is suitable for you:

- If you enjoy designing and writing
- If you enjoy using social media
- If you enjoy making things such as magazines
- If you enjoy TV adverts

What you will do on this course:

- Create social media posts.
- Devise and make TV adverts
- Take photographs and record videos
- Create books and magazines.
- Make vox pops (asking questions to the public)
- Design posters and leaflets
- Design merchandise which can be sold

This course is available as:

- Company Day (Thursday)





OrpheTots

OPTIONAL

ALL STUDENTS

This course is suitable for you:

- If you hope to work with children in the future
- Are creative
- If you enjoy interacting with children

What you will do on this course:

- Learn how to effectively communicate with children
- Complete a Basic child first aid course
- Help to set up and run a weekly stay and play session at Orpheus
- Create activities for children
- Lead activities with children
- Participate in work experience at a local nursery

This course is available as:

- Enterprise Day (Wednesday)



Music

OPTIONAL

ALL STUDENTS

This course is suitable for you:

- If you enjoy singing
- If you enjoy working as a team
- If you enjoy performing
- If you enjoy developing new ideas for performance opportunities

What you will do on this course:

- Improve the technical skills you need as a singer
- Develop your confidence to sing in a group as well as alone
- Take on a fundamental role in the organisation of the performance group
- Evaluate your performance highlighting the successes and areas for improvement
- Analyse the work of your peers and offer constructive criticism

This course is available as:

- Enterprise Day (Wednesday) Please note that this course has an audition process so only successful auditions will be chosen

Production Design

OPTIONAL

ALL STUDENTS

This course is suitable for you:

- If you enjoy experimenting with art materials and equipment
- If you like being creative and want to make your ideas into things
- If you want a career in costume design
- If you want a career in stage and film design

What you will do on this course:

- Learn how to design for theatre, film and TV
- Learn how to create designs that help tell a story
- Make original work
- Design costumes and make masks for Orpheus shows.
- Design and make sets for Orpheus shows
- Design and make props for Orpheus shows
- Work in a team and with all other company day groups

This course is available as:

- Company Day (Thursday)



Production Technology

OPTIONAL

ALL STUDENTS

This course is suitable for you:

- If you enjoy working with technology
- If you want a career in recording music
- If you want a career in lighting
- If you want a career in live sound
- If you like being creative on computers

What you will do on this course:

- Learn how to record music in a recording studio
- Learn how to use a lighting desk in a theatre
- Learn how to use a sound desk in a theatre
- Help with sound and lights at Orpheus events
- Write and record theme music for Orpheus shows
- Write and record background music for Orpheus shows
- Work in a team and with all other company day groups

This course is available as:

- Company Day (Thursday)

Rocket Radio

OPTIONAL

YEAR 3

This course is suitable for you:

- If you enjoy listening to music
- If you enjoy talking to people
- If you enjoy being creative
- If you enjoy presenting
- If you enjoy having your voice heard
- Are in your 3rd year at Orpheus

What you will do on this course:

- Develop your recording and broadcasting skills
- Use state of the art equipment
- Have your own hosting slot
- Research and discuss topical issues that are important to you
- Play the music you like to listen to
- Host at fundraising events
- Learn and develop skills required for work in the media industry

This course is available as:

- Next Stage (Friday) (3rd years only)



Student Voice

Students at Orpheus feel empowered, valued and trusted, and have a greater sense of pride in helping to shape the direction of the college through giving their views and feedback.

Each and every single day there is evidence across the whole college of the value and contribution of the students' voices and it is one of the most important components in shaping the identity of the Orpheus Centre. The Student Council meets to discuss key issues that impact all students and enables them to share their views about what's happening in the organisation from their perspective. It means there is continuous communication directly between the senior management team and students and it is treated every bit as seriously as any other meeting. An extended branch of the Student Council has also been formed - the Wellbeing Forum. This group is tasked with developing ideas to improve wellbeing for students and staff across the college.



“I love Orpheus. It makes me happy and makes me calm. Sometimes Orpheus is my family to me.”
Student at Orpheus



The Wellbeing Forum puts on various activities, runs a weekly wellbeing shop, and creates resources which are used by learners and staff across the college to support anxiety, stress, and improve general wellbeing.



Safeguarding

The protection of adults at risk is a priority and safeguarding is seen to be the duty of all staff and trustees at the Orpheus Centre.

All staff are required to follow the Safeguarding and Safer Recruitment Policy and all staff receive induction and regular safeguarding training. The Orpheus Centre strives to maintain a transparent and open culture where everyone feels safe and able to share concerns.

Concerns relating to safeguarding are always listened to and taken seriously. We strive also to enable students to develop their understanding of keeping safe. We work in partnership with key agencies involved, to ensure the best possible provisions and outcomes in relation to safeguarding.

Student Safeguarding Ambassadors

The Student Safeguarding Ambassadors support the safeguarding team by sharing messages within their peer groups, and giving a helpful insight into possible challenges they may see. These students also help raise awareness of important issues among their peers such as online bullying and provide an important way for students to find help if they need it.

Scan the QR code to view a video created by Aiden one of our Student Safeguarding Ambassadors





KEEPING YOU SAFE MATTERS

If you are worried, need help or see something that is wrong, speak to the Safeguarding Team



Chloe Smith
Principal



Moira Clifton
Chief Operating Officer



Sam Owen
Head of Care



Brooke Smith
Assistant Principal
SENCo



Harriet Ayhan
Deputy Head Of Care



Alex Gordon
Curriculum Manager



Chris Lammin
Assistant Principal
Curriculum & Quality

ORPHEUS.ORG.UK/SAFEGUARDING
Safeguarding is everyone's responsibility

What Orpheus looks like



Facilities

We have specialist facilities at Orpheus catering to the students needs and the curriculum. These include:

- Art Studio
- Independence Hub
- Recording and Music Studios
- Sensory Garden
- The Barn Theatre
- Media Space
- Creative Arts Café
- Canteen
- Radio Station
- Gym and Multi-Use Games Area (MUGA)



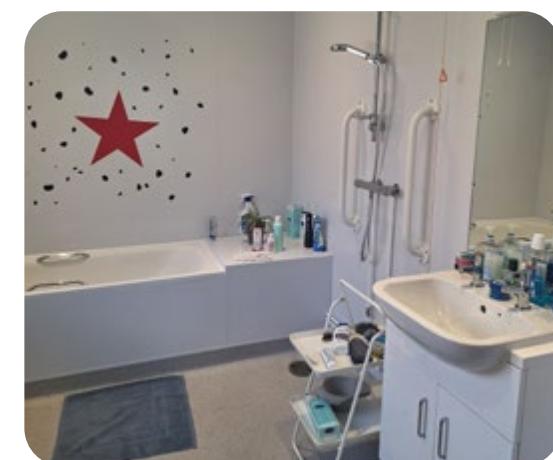
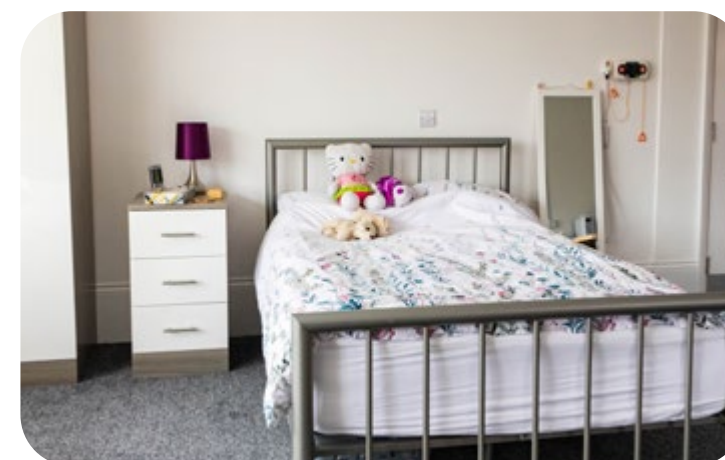
Housing

We have 21 studio flats on site for tenants who are in either Year 2 or 3.

The flats include an accessible bathroom and kitchen.

Tenants have access to out of college hours activities as part of ACT II (See page 34). Day students can also take part but their travel arrangements will need to be amended for the activities chosen.

Potential tenants will be chosen if it is part of their goal to live on their own or in supported accomodation



Orpheus is located in the beautiful rural area of Godstone with nature all around. The centre is an open and welcoming place whilst keeping the charm of its history. There are wonderful grounds including a lake which gets frequent visits from ducks, geese and other wildlife. All of our facilities have been updated to help suit students' and staff needs.

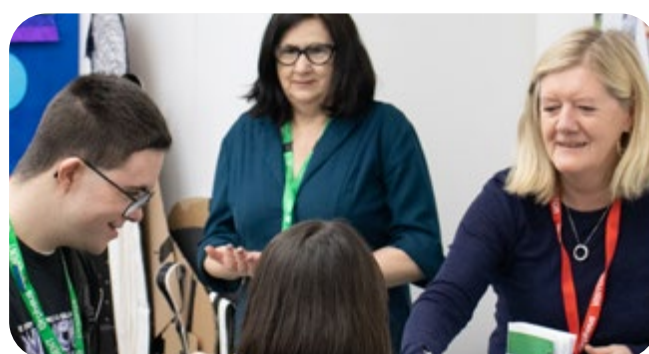
Student Activities and Clubs

Students have had a great input into many areas of the college including new extra-curricular, student led activities.

Students have been able to take ownership of the centre's spaces, to give ideas of the resources and facilities they would like.

There are currently 15 break and lunchtime clubs which support the social and emotional development of the students.

Clubs include exercise, beauty, dance fit, mindfulness, diamond art, Wii Fit, Makaton sing and sign and quiz clubs.



These facilities include a multi-use games area, relaxation tools, therapy dogs, music equipment, and many other resources.



ACT 11

Act 11 is our evening and weekend learner led enrichment activities timetable. This is for students to catch up, share experiences and have some fun outside of the college sessions.

These clubs include:

- Basketball
- Include Choir
- Amareece Dance
- Whoop Dance
- Sports & MUGA
- Gaming clubs Wii / Switch
- Board Games, card games and other
- Bowling
- Disco onsite and offsite, including Pryzm night club discobility
- Boxercise
- Strictly Ballroom
- Swimming
- Wellbeing zoom night with Prospero

Outreach and Performances

We believe that collaboration through outreach is key to giving the students as many opportunities as possible to develop their social and employment skills; outreach gives the students a space to share their skills and demonstrate what they can do. The students at Orpheus take pride in being determined, resilient and having their own opinions. By working with other organisations, we can show what fantastic assets they are to their local communities and to potential employees.

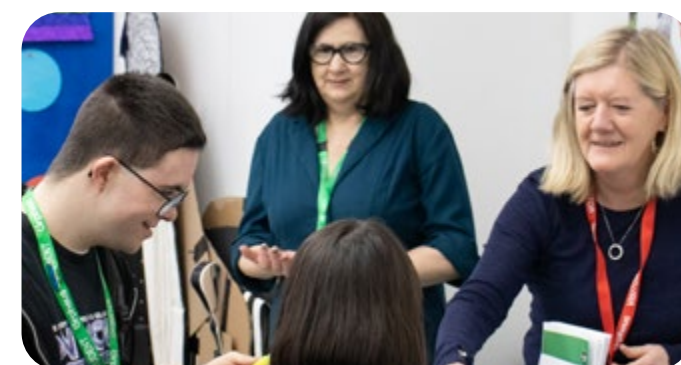
We believe in a fairer society for disabled people. We welcome other organisations to discover how they can achieve their own goals while also supporting us in developing their understanding of disability.

“Here at the Amber Foundation we house up to 30 young homeless people. Since the Listening Bench project began in September 2023, the young people we support were very excited to visit Orpheus each week and spend time with Orpheus students. They have gained invaluable communication skills, built up their self-confidence and patience and thoroughly enjoyed the art and music sessions with Orpheus students. Thank you for this partnership project, through the Listening Bench project, Orpheus have added value to Amber's programme of support to transforming the lives of young people.” Louise Cheung, The Amber Foundation

Performance Outreaches

During their three years at Orpheus, the students have many opportunities to showcase their diverse talents far and wide at Orpheus events. Through performing in front of large audiences, the students develop their confidence, resilience and professionalism. The students break down barriers between disabled and non-disabled people every time they perform as they demonstrate what is possible and defy societies' expectations.

Check out one of the latest projects by scanning this QR code



Therapy Provision

We work with a number of therapists who offer a range of therapies to support students and complement the learning programme.

Counselling Services

One to one counselling sessions are available onsite to help students to cope with the challenges life has to offer. It enables students to have a greater degree of self-awareness and understanding of themselves and others. This improves self-esteem, wellbeing and encourages individuals to build resilience.

Speech and Language Therapy

We offer group and individual speech and language therapy sessions. This enables students to further develop their communication and social interaction skills while building self-esteem to fulfil their aspirations.

Occupational Therapy

Occupational therapy is available to students who require additional support to enhance their independence in tasks.

Music Therapy

Students have the opportunity to participate in a small discrete group music therapy session. Rather than teaching students to play musical instruments, music therapy allows an individual the freedom to express their feelings through sounds, silences, gestures and words. Our music therapist facilitates communication and provides the space for students to acknowledge, release and explore often previously unexpressed feelings.

Dramatherapy

The dramatherapy space is a place where the students can be creative through dramatic play with puppets, stories and role play, subconsciously exploring their emotions and past experiences.

Physiotherapy

Physiotherapy is available to students who require additional support to restore and maintain functional movement, reduce pain and promote health.

“I also learn to advocate for myself and stand up for myself and what I want and what I believe in”
Orpheus Student



Orpheus is proud to have won national awards for our work on health and wellbeing
NATSPEC (2022) Award for Health and Wellbeing



The Orpheus Continuous Cycle of Wellbeing project

The Orpheus Continuous Cycle of Wellbeing project (OCCoW) was implemented as we wanted to provide effective activities, strategies and celebrations of success to support the wellbeing and mental health needs of students following the pandemic.

It is an innovative practice which inspires and nurtures students to use their own voice and empowers them to take ownership for their own wellbeing. It has evolved to enable emotional and sensory regulation, to understand that it is 'ok to not be ok', enables students to celebrate a strong sense of self-worth, and develop their motivation which is part of their lifelong learning.

OCCoW combines each wellbeing activity with Zones of Regulation to provide a flexible programme created and led by our learners to support their wellbeing during and outside of the college day. OCCoW is a priority that is fundamental to our students' health and happiness, enabling students to discover activities and strategies that meet their individual needs and increase their positive focus to optimise purposeful learning. The activities provide opportunities for students to discuss their experiences, learn from their peers, showcase their work, share ideas for positive change and develop and use strategies which build on our overall work around wellbeing.

Care and Support Service

The care team is a 24 hour service, available seven days a week and is available for both day and tenant students

The team supports students with many aspects of daily life to help develop independence skills such as personal care, building friendships and relationships, menu planning, shopping, cooking, laundry and cleaning their flat.

The aim is to teach and support students to take responsibility and work towards a full and independent life.

For those living on site in our supported living studio flats, support is available 24 hours (Day and Night) when help is needed as part of their care and support plan.

Students are appointed a Key Worker, who is their named person that meets with them regularly.

After college hours, students are welcome to take part in activities that interest them through our ACT II provision and we encourage students to take part and enjoy some social time together.

Weekends might include bowling, cinema and trips to the pub, or it might just be a chance to rest and relax.

Everyone can choose how they spend their time outside classroom sessions and we also offer other group activities on site such as cooking, karaoke and film nights.



Learning Support Care Assistants

These roles are an essential part of life at Orpheus as this team provides support to students both in their flats and in the classroom.

This helps build trusting relationships with staff and enables the team to fully understand the needs of the students both inside and outside college.

“I can be more independent and do things in my flat without any support”
Student at Orpheus



Careers: Meet Sam

Alumni Sam is incredibly hard working and passionate about dance. He attended dance classes after college and completed online courses with professional dance companies like Candoco.

Sam's aspiration, when he attended Orpheus, was to become a dance tutor and run his own dance workshops for children.

Sam was accepted on the Unexpected Leaders programme run by the performance company Diverse City, something he was incredibly proud of.

During the programme Sam had the opportunity to develop his own work. Sam created his own dance workshop, led his own dance session for his peers, while co-teaching alongside his mentor.

Sam secured a placement to shadow workshops lead by professional tutors from Synergy Dance. This opportunity allowed him to experience three different workshops for young children with and without disabilities aged from 5 to 18.

Sam has now gained paid employment as a Dance Teacher with Synergy Dance Outreach and was recently in the news for his work.



Transitions and careers

At Orpheus we are committed to ensuring all students have access to careers advice, support in college and access to employers and the workplace.

Our lead for Careers at Orpheus is Paulette Russell who can be contacted by emailing pauletterussell@orpheus.org.uk

Please do get in touch if you have any specific careers queries.

Our careers provision is based on the Gatsby Benchmarks as recommended in the DfE's Careers Strategy (December 2017) and the Statutory Guidance for Careers (January 2018). The 8 benchmarks are explained below:



Transitions Wellbeing Sessions

Sessions are hosted via Microsoft Teams as part of the ongoing support. This is very much led by the graduates who attend, but it's a great way for them to reconnect and provides them with a virtual forum to talk through their feelings, celebrate each other's success and gain support from each other; sharing positive quotes, health and wellbeing tips. During the sessions they also take turns to record a short 'Spotlight' video, where they talk about their lives after Orpheus and provide tips and advice for new and existing students at Orpheus.

Transitions and careers

Orpheus is committed to providing Careers Education, Information, Advice and Guidance (CEIAG) to all students through the curriculum and organised activities.

Careers Guidance will focus on the specific needs of the individual student to promote self-awareness and personal development. It will aim to provide current and relevant information to enable each student to make informed decisions about their future. It will be presented in an impartial manner, be confidential and differentiated to suit the requirements of each individual student. All students are provided with impartial 1-2-1 career guidance through at least three dedicated meetings, but this is not limited and additional guidance can be requested as required by students.



The Careers Programme

We believe that good CEIAG connects learning to the future and must widen our students' horizons, challenge stereotypes, and raise their aspirations. In line with our strategic aims, we aim to motivate our students by giving them clear ideas about routes to jobs and careers they will find engaging and rewarding.

Orpheus careers programme will provide students with the knowledge and skills necessary to make successful transitions to the next stage of their life and fulfil their full potential. Our career programme is ambitious and promotes meaningful opportunities and activities to support students' awareness. Activities include enterprise, work related visits, work experience, employer engagement, work related learning, transition visits, training provider and college visits, career fairs, mock interviews, CV workshops, performances, individual learning activities and more.

When a student leaves, Orpheus will continue to provide information, advice and guidance, and support for a minimum six months, as directed by the young person. This extended support service ensures that students have a smooth and seamless transition to the next stages of their journey after Orpheus.

Extended support encompasses regular check-ins with the young person, access to a support network to ensure that life aspirations are met, as identified within their plan as well as further opportunities within their chosen communities.

Life beyond Orpheus

In their final year, there is a greater emphasis on preparing students for transition into life beyond Orpheus and lots of this work happens on the **Next Stage** programme.

Next Stage operates in place of the majors pathways open to first and second year students. It includes a bespoke work experience programme which enables students to gain experience within industries that are tailored to their individual interests and aspirations. They also have ongoing support in securing housing which meets their needs and plenty of social development and independence opportunities. Next Stage students have additional in-house work opportunities in the form of a café and a radio station.

All students will also have stand-alone English and Maths lessons.

Rigorous initial assessment helps to identify key areas for development in these subject areas and, when delivered alongside vocational areas of interest, enables for a deeper and more relevant learning experience. Students will achieve a recognised qualification in both these subjects if applicable.



Independence lessons allow for development in key areas such as travel training, road crossing, getting about safely in the community, household skills such as cooking, among many other important skills needed to achieve greater independence. Students will achieve a recognised qualification in this and the course features many off-site visits to places such as town centres, educational life skills centres, and restaurants.



Applying For a Place

If you are considering an application for Orpheus, here is how the process works

Our assessment process will determine whether we can meet your young person's needs, keep them safe and provide the appropriate study programme to stretch and challenge them.

The assessment process starts in September when applicants may be asked to attend a face-to-face meeting with our admissions team. Application packs will usually be available around the end of May for entry in September of the following year. You can download the application pack by visiting: www.orpheus.org.uk/apply-2026-27

If successful, we will offer your young person a place at Orpheus on a personalised study programme.

- Once our offer has been accepted, Orpheus will submit costs to the Local Authority.
- Placements are confirmed, once funding from the Local Authority has been agreed.

Students follow an arts based curriculum designed to help improve confidence and independence and our programme is typically spread over a three-year period.

Scan or
click the
QR code to
apply



Get involved

We are a charity as well as a college and there are many ways that you can support including:

Volunteering

Orpheus would cease to exist without the large team of volunteers who undertake regular support roles at the centre. The commitment, enthusiasm and dedication of each of our volunteers has a fantastic impact and has contributed to transforming the lives of hundreds of young disabled adults over the past twenty five years. In 2016 our volunteers were awarded the Queen’s Award for Voluntary Service – the highest award given to volunteer groups across the UK.

Find out more at:
www.orpheus.org.uk/volunteering



Events

Discover a variety of engaging events that bring our community together. Whether it’s a fundraiser, workshop, or social gathering, our featured events offer something special for everyone. Stay connected, get involved, and help us make a difference!

Check out our latest events:
www.orpheus.org.uk/events

Regular giving

Supporting Orpheus with a regular gift is a simple way of showing our students that you care about their future.

Many of us don’t think twice at spending £3 on a cup of coffee, but just £3 could make so much difference to our work and the lives of our students. And if each of our supporters gave a little each month, together that little donation can turn into a pretty big donation!

Find out more at:
www.orpheus.org.uk/regular-giving

Subscribe to our
monthly newsletter
for access to our
college’s latest news
and events!



Travelling By Train

The nearest railway stations are Caterham, Redhill and Oxted. Caterham and Redhill are the best for wheelchair access.

Redhill is the busiest and has the most reliable service. Taxis are available outside all of these stations.

The Orpheus Centre,
North Park Lane,
Godstone
RH9 8ND
01883 744664

Travelling By Bus

There is a bus stop at the beginning of North Park Lane. Bus routes 400 and 410 stop at the Waterhouse Lane stop. There is no road crossing, so please be careful.

The Orpheus Centre is about a 20 minute walk up North Park Lane.



@orpheuscentre



@theorpheuscentre



orpheus-centre

ORPHEUS.ORG.UK



Registered Charity Number: 1105213

www.orpheus.org.uk

The Orpheus Centre
North Park Lane
Godstone
Surrey
RH9 8ND



Good

